



FARNSWORTH FILES

6th Grade ELA Quarterly Newsletter

FEBRUARY 2024 | VOLUME 15

TEACHER CONTACT INFORMATION

Christopher Englund
christopher.englund@spps.org
(651) 744-4931 x44931

Kolleen Maveus
kolleen.maveus@spps.org
(651) 293-8880 x42262

CO-TEACHERS

Joanna SanCartier (SPED)
joanna.sancartier@spps.org
(651) 293-8880 x47919
Alex Hilton-Watson (ELL)
alex.hilton-watson@spps.org
(651) 293-8880 x47911

READERS WORKSHOP

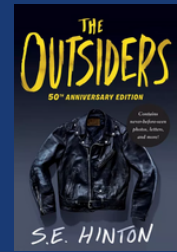
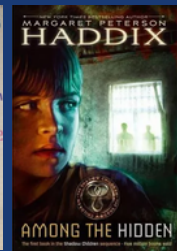
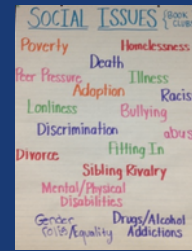
This quarter, our focus will be on comprehending different **perspectives of social issues in books** through participation and meaningful conversations in book clubs. Students will be studying:

- the relationships between characters
- positive & negative sides to characters and issues
- how traits and power imbalances contribute to issues
- personal & group issues
- repeated themes

Following this unit will be a short time of **MCA test prep** to ready students for the upcoming MCA test in reading comprehension.

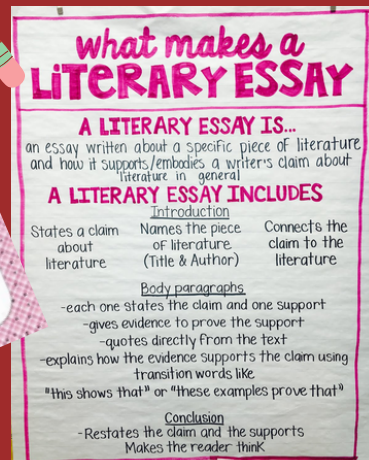
WRITERS WORKSHOP

This quarter, we put into practice the writing skills we have been developing so far this year by **writing our first literary essay**. This essay will focus heavily on the structure of writing using "boxes & bullets" organizational methods to develop characters, compare & contrast, and explore themes. Following this unit, we will introduce **opinion (argument) writing** where students will be writing persuasively.



FROM MS. JOANNA...

If your student is receiving SPED support, feel free to contact me with any questions or concerns. My contact info is above.



MCA TESTING

IN ORDER FOR YOUR CHILD TO DO THEIR BEST ON THE MCA READING ASSESSMENT, WE ENCOURAGE FAMILIES TO SUPPORT THEIR CHILD IN THESE WAYS AT HOME:

- ENSURE YOUR CHILD GETS A GOOD AMOUNT OF SLEEP DURING THE TESTING WEEK
- SUPPORT YOUR CHILD BY PROVIDING HEALTHY AND SUSTAINING MEALS
- PROVIDE YOUR CHILD WITH A PEACEFUL SCHEDULE AT HOME AND MAKE SURE THEY GET TO SCHOOL ON TIME
- SUPPORT YOUR CHILD WITH POSITIVE AFFIRMATIONS ON HOW THEY TAKE THE TEST. ENCOURAGE THEM TO DO THEIR BEST!

ELL UPDATES...

Access Testing for ELL students will be done during early Q3. Please contact your ELL teacher if you have any questions.




READING AT HOME

Reading at home for **30 minutes each day** is a continued expectation for 6th grade students. There is no shortage of reading material available to students. In addition to physical books, students have access to multiple apps on their iPads with digital books. All reading logs and login information are linked in Readers Workshop classes in Schoology for students. Please be encouraging students to work toward this 30 minute reading goal each day as it will help to improve comprehension skills and boost testing scores.

WEEKLY READING LOG SAMPLE

WEEK 1: NOVEMBER 12-18		BOOK TITLE	MINUTES READ	PAGES READ
11/12	Friday			
11/13	Saturday			
11/14	Sunday			
11/15	Monday			
11/16	Tuesday			
11/17	Wednesday			
11/18	Thursday			



APPS & WEBSITES FOR READING ONLINE:

- Epic
- MackinVia
- LibraryGo
- eBooks MN
- TeenBookCloud
- TumbleBooks Library
- Audiobooks & Podcasts
- St. Paul Public Library Overdrive



GRADING & HOMEWORK

All classwork, practice, and assessments (projects, tests, quizzes, performances) will be graded according to proficiency on the Common Core Standards. Students will receive a score of 0 - 4 on all work.

- 0 - incomplete
- 1 - beginning
- 2 - developing
- 3 - proficient
- 4 - exceeds

**** A score of 0 - 2 can be redone until the student reaches a score of at least 3 (within the designated quarter).**

Grades are weighted:
20% - classwork
80% - assessments



QUARTER 3 EXTENDS FROM
JANUARY 29, 2024 TO
MARCH 28, 2024

For more resources, visit:
<https://libguides.spps.org/mssterm>

UPCOMING UNITS OF STUDY

READERS WORKSHOP

QUARTER 4
Fantasy Genre Book Clubs
Poetry



WRITERS WORKSHOP

QUARTER 4
Fantasy Genre Writing
Poetry

